

CAN-ETH

CAN/Ethernet gateway



 **EtherNet**

CAN

Features

- UDP encapsulation for CAN messages
- Peer-to-peer mode
- Broadcast mode
- 8 CAN receive filters
- Low configuration overhead, just an IP address and CAN bitrate to set-up
- Embedded web server for easy configuration and commissioning using a web browser
- Firmware upgradeable via Ethernet

■ **CAN-ETH** is a CAN to Ethernet gateway specifically designed to interface CAN networks with TCP/IP networks.

The gateway features a CAN and an Ethernet port and can be mounted on a DIN rail. It encapsulates CAN messages into UDP packets and transports them via Ethernet. The gateway can operate in peer-to-peer or broadcast modes.

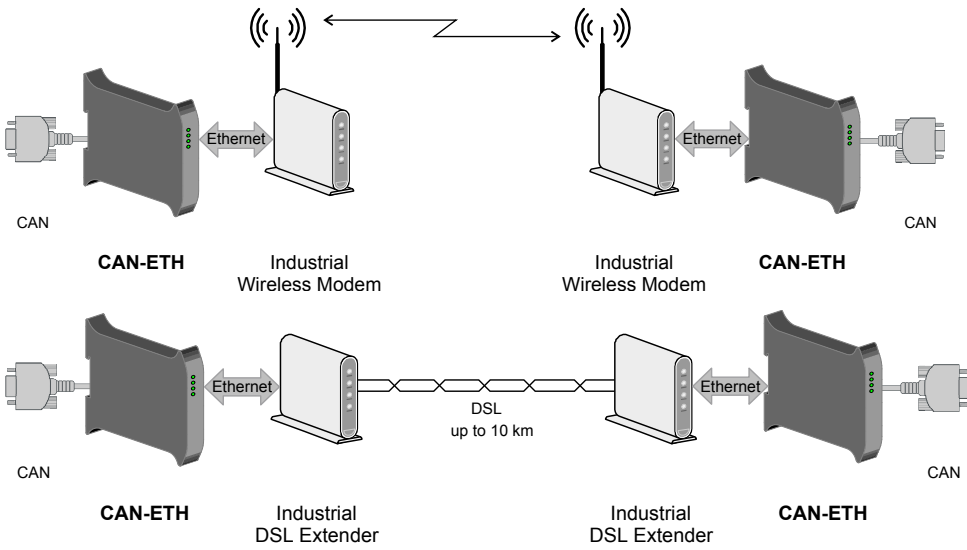
Common applications include:

- CAN bus length extensions
- CAN to DSL bridging
- Wireless networking of CAN networks

CAN-ETH

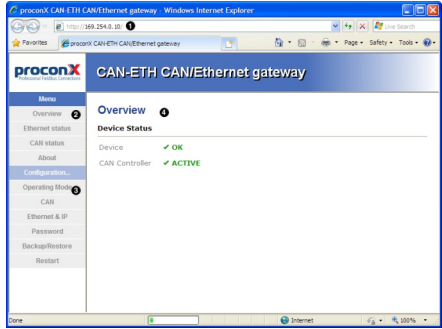


Usage

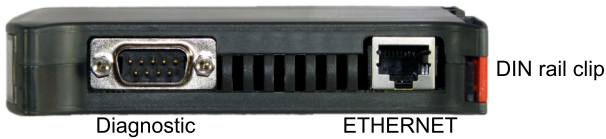


Order Information

Model number	Configuration
CAN-ETH	Gateway with Ethernet and CAN interfaces in DIN rail enclosure



Connections



Specifications

Interfaces

- 1 Ethernet
- 1 CAN
- 1 RS-232 Diagnostics

User interface

- Power, Ethernet, Device & CAN Status LEDs
- Web browser interface for Monitoring & Configuration

Ethernet port

- IEEE 802.3i 10BASE-T
- IP, UDP, TCP, HTTP, ARP, TFTP
- 1.5 kV galvanic isolation

CAN port

- DE9M with CiA DS-102 pinout
- ISO 11898 physical layer
- 10, 20, 33.33, 47.619, 50, 83.33, 95.238, 100, 125, 250, 500, 800 kbit/s, 1 Mbit/s
- Up to 64 nodes

Power requirements

- 10-30 V DC, 750 mW
- 30 mA typical @ 24 V DC

High availability

- Watchdog supervision
- Brown-out detection

Electromagnetic compatibility

- Emissions CISPR 22/EN 55022 (Class A)
- Immunity EN55024
- Electrostatic discharge EN61000-4-2
- Radiated RF EN61000-4-3
- Fast transients EN61000-4-4
- Conducted RF EN61000-4-6

Environment

- 0° to 60 °C / 32 to 140 °F operating temperature
- 25° to 80 °C / -13 to 185 °F storage temperature
- 10 to 95% humidity, non-condensing

Form factor / enclosure

- Self-extinguishing PC/ABS (UL 94-V0)
- 35 mm DIN rail mountable
- IP 20 / NEMA Type 1
- Convection cooling
- 101 x 22.5 x 120 mm / 3.98 x 0.886 x 4.72 in
- 0.13 kg / 0.287 lbs

Compliance

- C-Tick
- CE, RoHS
- FCC Part 15 (Class A)
- ICES-003 (Class A)

www.proconX.com
 mail@proconX.com
 Tel +61-3376 3911



DSESENET-2201 · © proconX Pty Ltd. Specifications subject to change without notice.
 proconX is a trademark of proconX Pty Ltd. All other trademarks and logos are property of their respective owners.