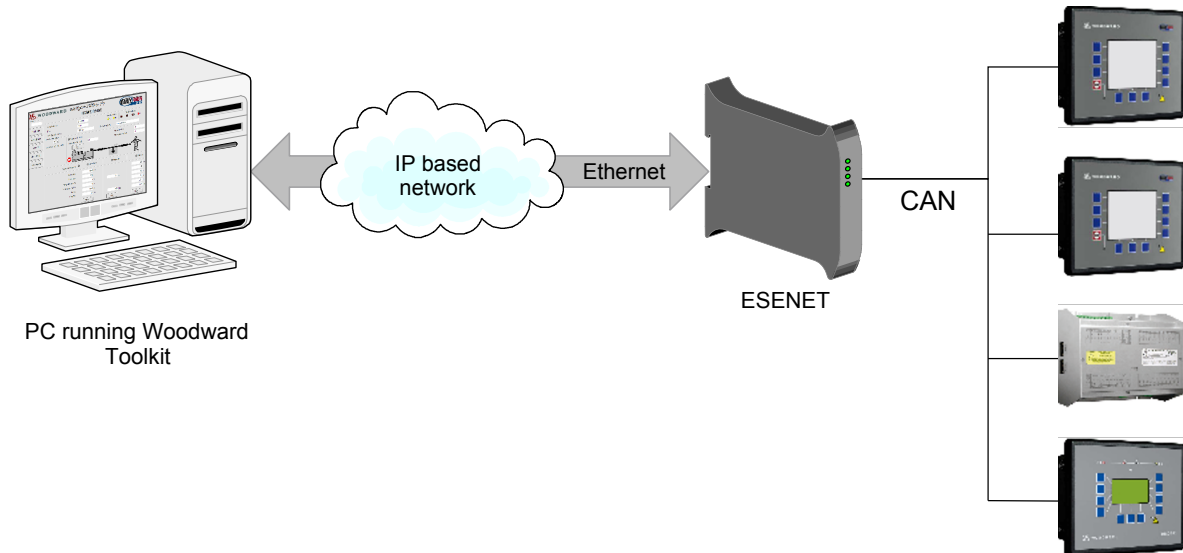


Running Toolkit via the proconX ESENET gateway

Application Note 309

Revision 2, October 2011



Remote Management of Woodward Easygen genset controls and LS-5 has become much easier with the introduction of the Toolkit interface for the *proconX* ESENET Ethernet/CANopen gateway. Since firmware version 2.0, the ESENET offers a TCP/CANopen-SDO bridge which is linked to a virtual CAN port on the Toolkit PC.

The *proconX* ESENET gateway now combines Modbus/TCP access and Toolkit interface into a single Ethernet/CAN gateway device. Using this facility you can run local and remote Toolkit sessions from your PC via Ethernet and TCP/IP through the ESENET gateway to Woodward controls connected on ESENET's CAN interface. The ESENET Toolkit interface can be used in parallel with Modbus/TCP connections.

Prerequisites

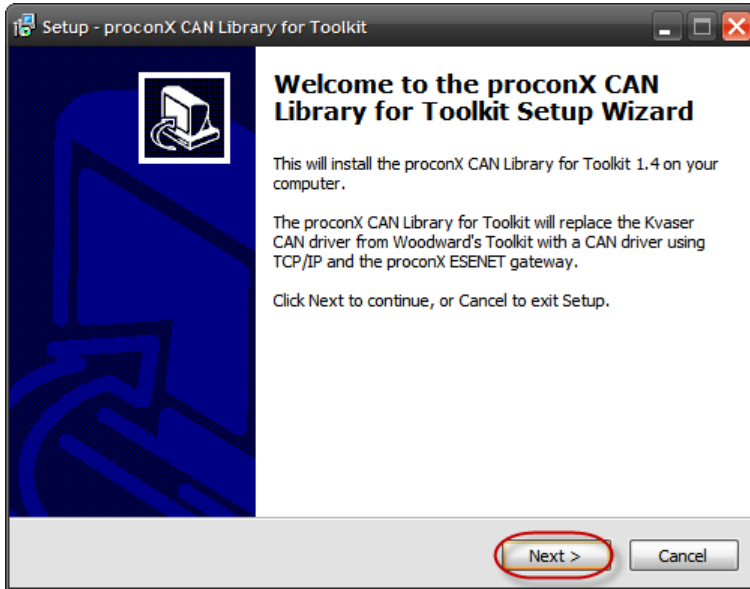
- *proconX* ESENET gateway with firmware 2.0 or above
- *proconX CAN Library for Toolkit* (available from *proconX* web site)
- PC with installed Woodward Toolkit

How it works

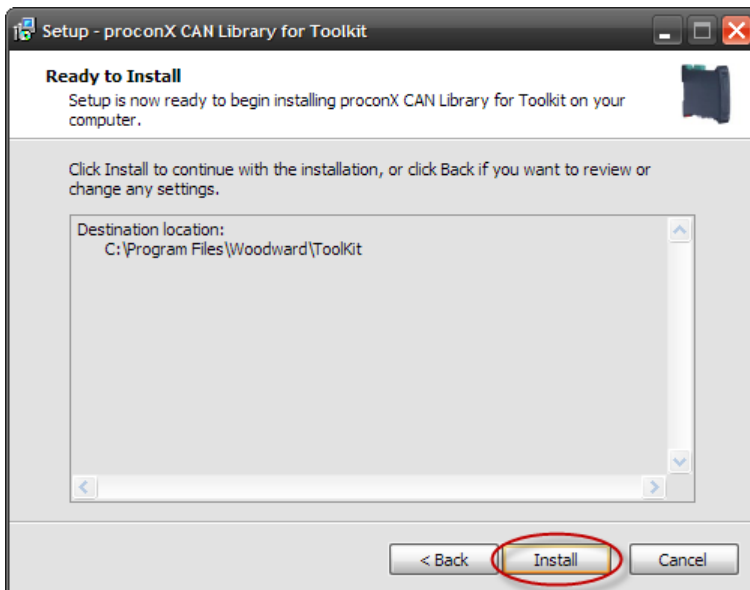
For Toolkit to recognise the ESENET gateway as a CAN interface, a virtual CAN port needs to be installed on the Toolkit PC. *proconX* provides a *CAN Library for Toolkit* installer which replaces Toolkit's Kvaser USB CAN driver with a ESENET specific CAN library.

Installation

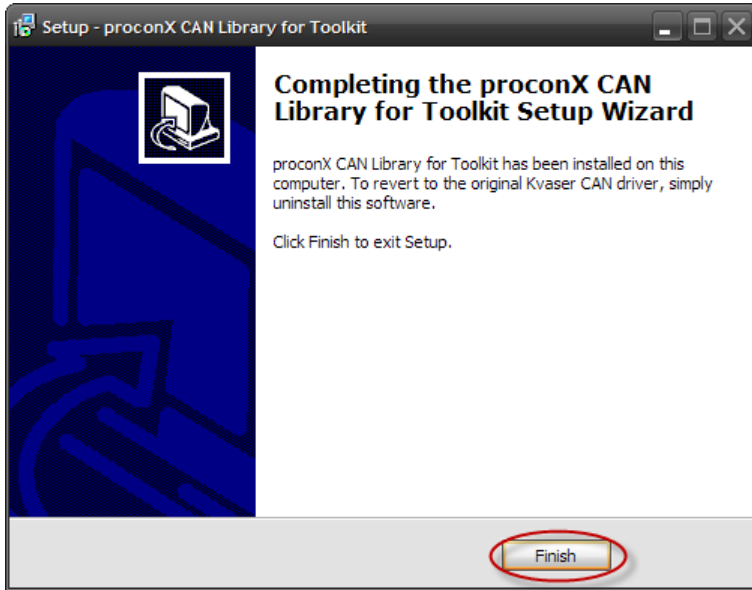
1. To install, run the self-extracting Installer executable and click **Next** to continue:



2. Click **Next** to confirm the installation:



3. The installation is completed, click **Finish** to exit the installer:



You can revert back to Toolkit's Kvaser CAN library by simply uninstalling the *proconX CAN Library for Toolkit*.

Running Toolkit

Launch Toolkit in the usual manner and click on the **Connect** button to open the **Select a network** drop-down box. In the **Network** selection list, choose **proconX ESENET** as CAN interface and confirm with **Connect**.

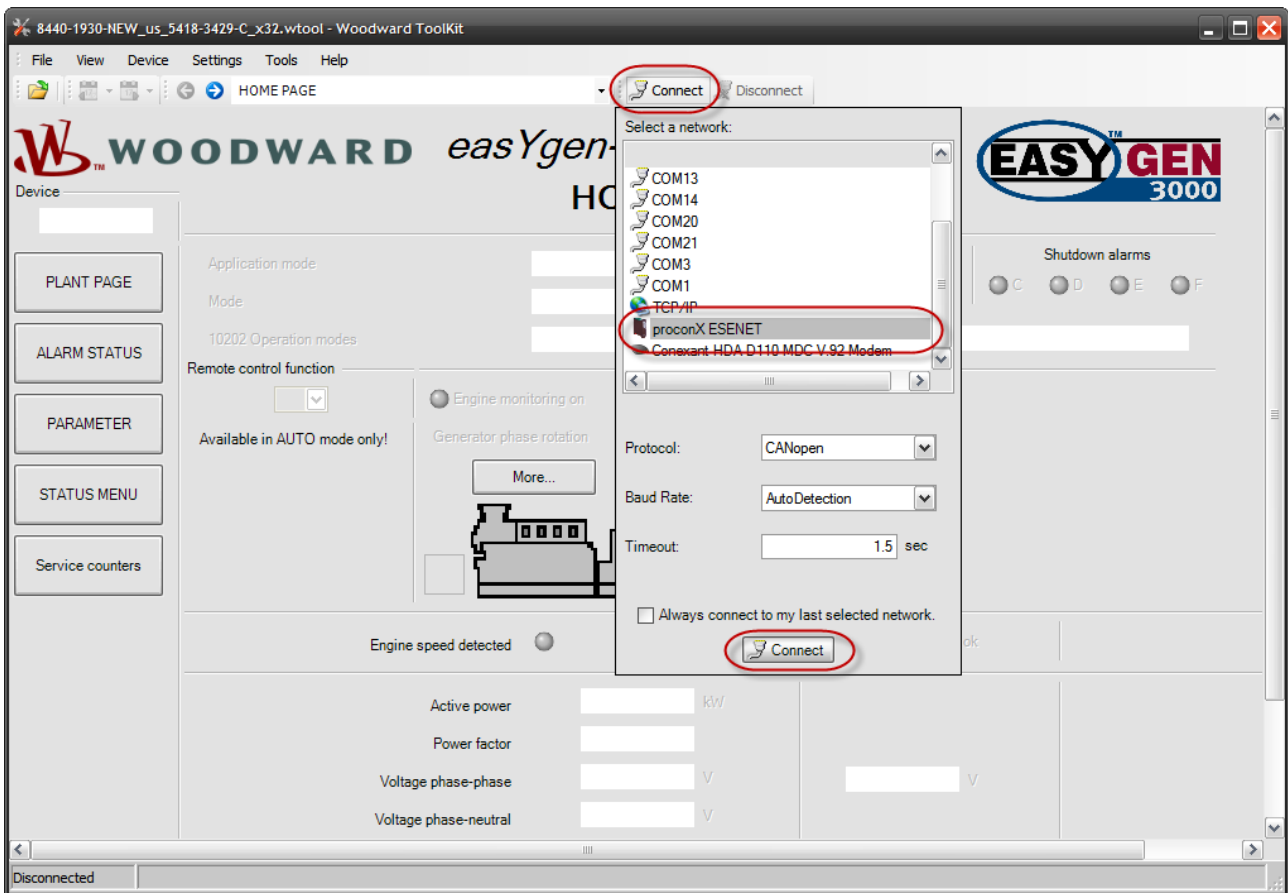


Figure 1: Toolkit network selection



The *proconX ESENET* selection will not show if the *proconX CAN Library for Toolkit* is not installed!

A dialog box will open and ask for the IP address of the connected ESENET gateway. Enter the correct IP address for the ESENET gateway and click OK.

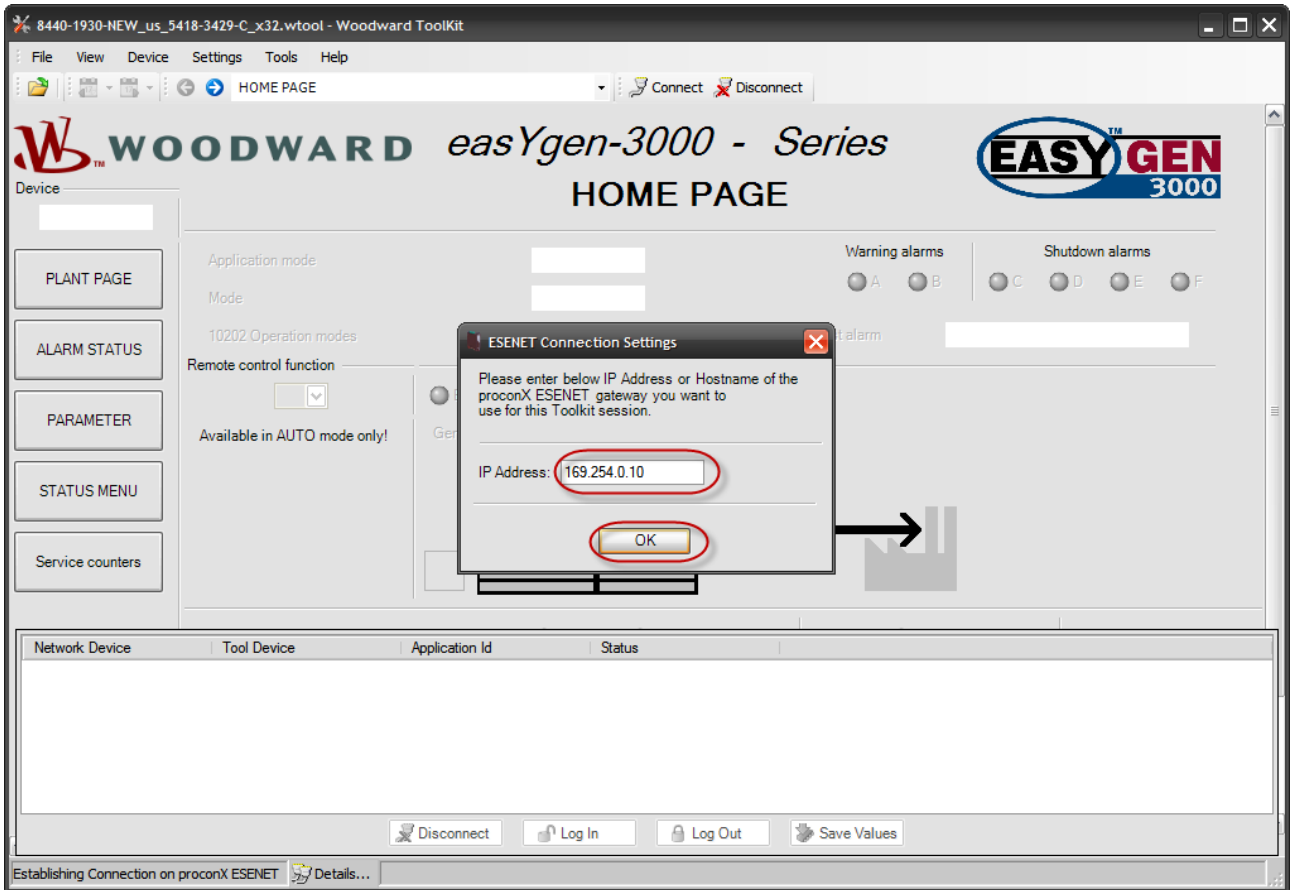


Figure 2: Entering the ESENET gateway's IP address in Toolkit

On successful connection, the status in Toolkit's status line will change from *Establishing Connection on proconX ESENET* to *Connected on proconX ESENET* as shown below:

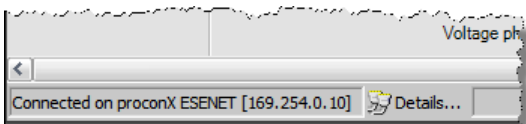


Figure 3: Successful CAN over TCP/IP connection

TCP Ports

The TCP/CANopen-SDO bridge uses the same TCP port as Modbus/TCP which is port 502. Using the same port as Modbus/TCP simplifies router configuration for VPN applications.

No part of this material may be reproduced or transmitted in any form or by any means or used to make any derivative work without express written consent from the copyright holders.

proconX is a trademark of *proconX* Pty Ltd. Easygen is a trademark of Woodward, Inc. All other product and brand names mentioned in this document may be trademarks or registered trademarks of their respective owners.

Disclaimer

proconX Pty Ltd makes no warranty for the use of its products, other than those expressly contained in the Company's standard warranty which is detailed in the Terms and Conditions located on the Company's Website. The Company assumes no responsibility for any errors which may appear in this document, reserves the right to change devices or specifications detailed herein at any time without notice, and does not make any commitment to update the information contained herein. No licenses to patents or other intellectual property of *proconX* are granted by the Company in connection with the sale of *proconX* products, expressly or by implication. *proconX* products are not authorized for use as critical components in life support devices or systems.

Support & product feedback

We provide an electronic support and feedback system for our *proconX* products. It can be accessed through the following web link:

<http://www.proconx.com/support>

Your feedback and comments are always welcome. It helps improving this product.

Contact

For further information about this document please contact us at:

proconX Pty Ltd
PO Box 791
Sumner QLD 4074
Australia
Website: <http://www.proconx.com>